

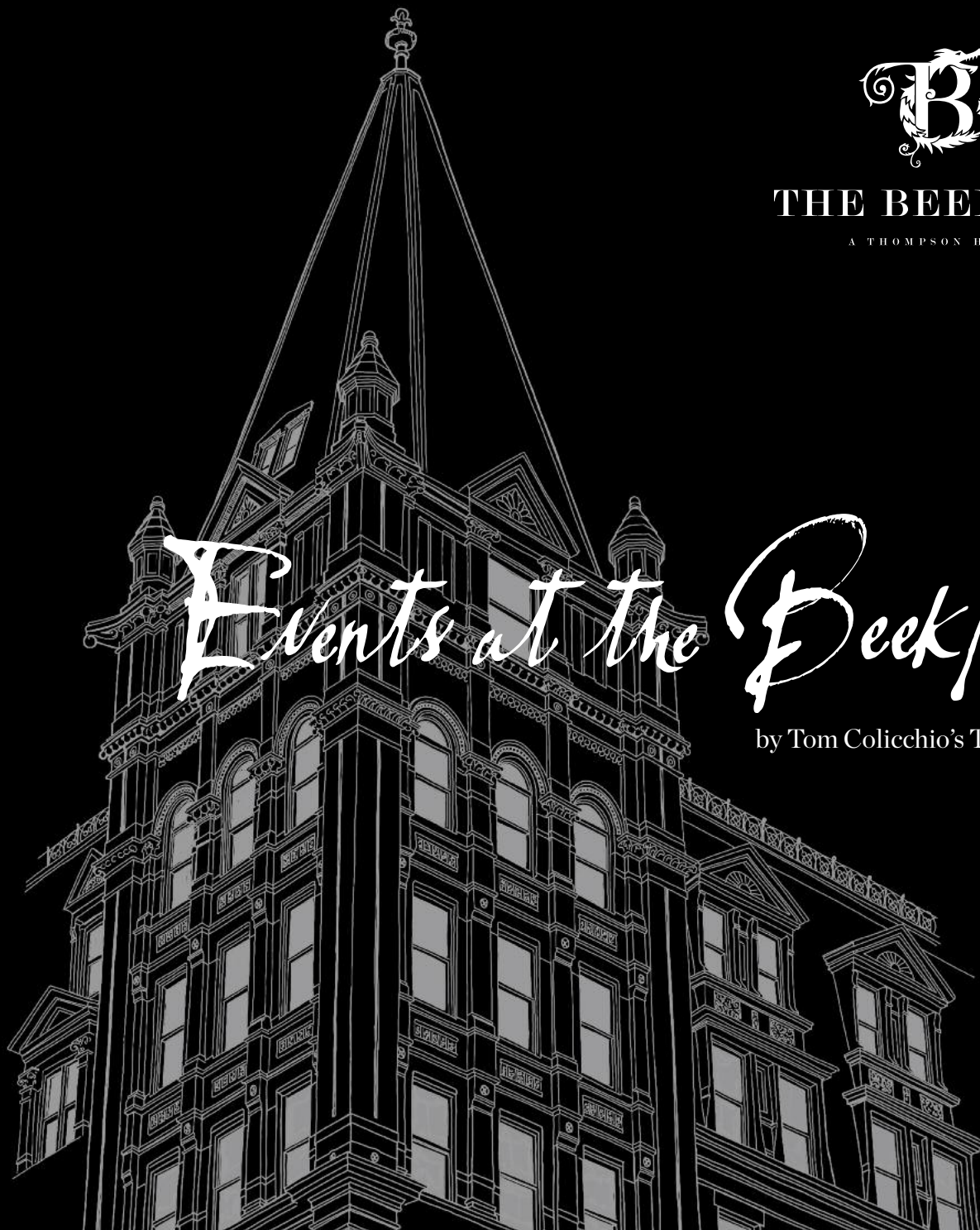


THE BEEKMAN

A THOMPSON HOTEL

# Events at the Beekman

by Tom Colicchio's Temple Court







## *The Perfect Location*

Nestled in the epicenter of Manhattan's vibrant New Downtown lies New York's last hidden architectural treasure, The Beekman. Built in 1881 as one of Manhattan's first skyscrapers, the heart of this iconic landmark building is its extraordinary nine-story Victorian atrium and the majestic pyramidal skylight.

## *The Perfect Experience*

"When I walked into The Beekman for the first time, I knew this was going to be an incredible project. The architecture and atmosphere spoke to me. They transport you to a different [older] New York, which has come to be reflected our menus: in classic dishes with modern charm. And when stepping through our doors, I want everyone to feel like they've discovered something special. To unplug, unwind, and create new memories in the space we've created."

— Tom Colicchio







# The Cellar

The Prefunction space between the lower-level rooms features black and white mosaic tiled floors, exposed brick and a custom chandelier. Combined with the Kelly and Farnsworth rooms, the entire floor is ideal for receptions, dinners with a separate cocktail space, product launches and business meetings.

## CAPACITY

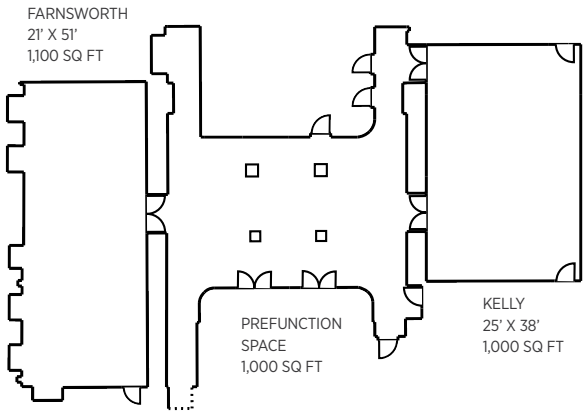
⊗ RECEPTION: 225

## DIMENSIONS

⊗ 3,100 square feet

## FEATURES

- ⊗ Curated Artwork
- ⊗ Wireless/High-Speed Internet
- ⊗ In-House Sound System
- ⊗ Original Exposed Brick







## Farnsworth

Located within our Cellar level, this space is named in honor of the building's original architect, James Farnsworth, and is notable for its vintage-inspired terracotta ceiling and original exposed brick.



### CAPACITY

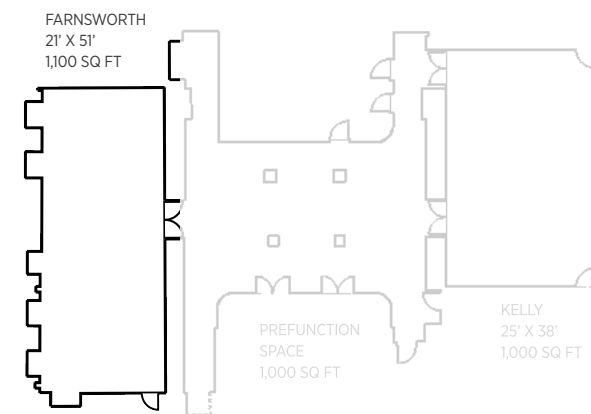
- ⊗ SEATED: 100
- ⊗ RECEPTION: 110
- ⊗ CLASSROOM: 66
- ⊗ THEATER: 135

### DIMENSIONS

- ⊗ 1,100 square feet (21'x51')

### FEATURES

- ⊗ Adjacent Prefunction Space
- ⊗ Wireless/High-Speed Internet
- ⊗ In-House Sound System
- ⊗ Original Exposed Brick







## Kelly

Named for Eugene Kelly, the building's first owner, this Cellar level space features original vaulted ceilings, exposed brick and stunning vintage chandeliers. A custom dividing wall separates the space for more intimate events or breakout meetings.

---

### CAPACITY

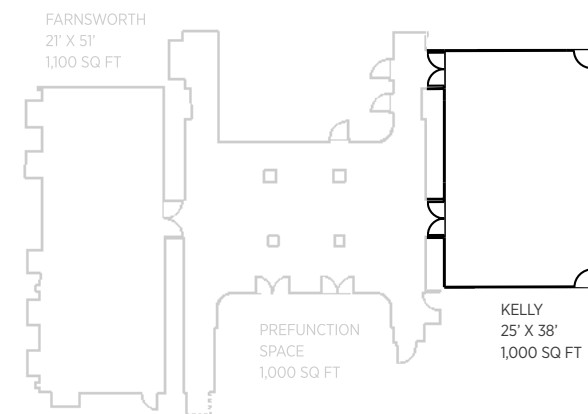
- ⊗ SEATED: 70
- ⊗ RECEPTION: 80
- ⊗ CLASSROOM: 66
- ⊗ THEATER: 125

### DIMENSIONS

- ⊗ 1,000 square feet (25'x38')

### FEATURES

- ⊗ Adjacent Prefunction Space
- ⊗ Wireless/High-Speed Internet
- ⊗ In-House Sound System
- ⊗ Original Exposed Brick
- ⊗ Retractable Dividing Wall







## Clinton Hall

Named after the library that existed on our site in the mid-19th century, this refined second-floor space features arched entries, custom crystal chandeliers and large windows to make for a truly elegant space.



### CAPACITY

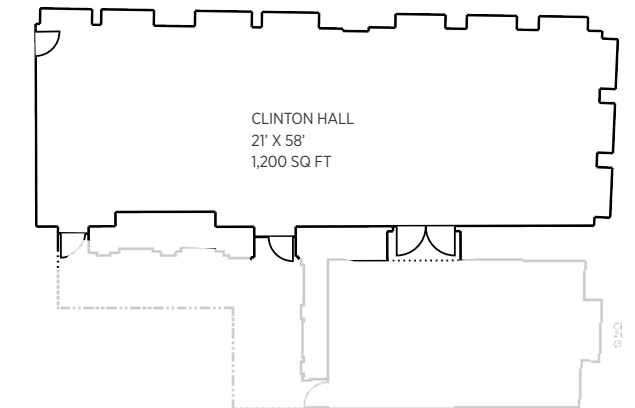
- ⊗ SEATED: 100
- ⊗ RECEPTION: 100
- ⊗ CLASSROOM: 66
- ⊗ THEATER: 145

### DIMENSIONS

- ⊗ 1,200 square feet (21'x58')

### FEATURES

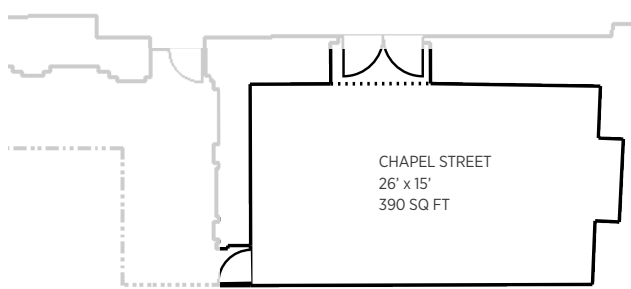
- ⊗ Projector and Screen
- ⊗ Wireless/High-Speed Internet
- ⊗ In-House Sound System
- ⊗ Natural Light







## Chapel Street



### CAPACITY

- ⊗ SEATED: 20
- ⊗ RECEPTION: 20
- ⊗ BOARDROOM: 18

### DIMENSIONS

- ⊗ 390 square feet (26'X15')

### FEATURES

- ⊗ Built In Plasma Screen
- ⊗ Wireless/High-Speed Internet
- ⊗ In-House Sound System
- ⊗ Natural Light

Adjacent to Clinton Hall, this second-floor space is ideal for intimate meetings and dinners and is named after the theater on our site where Shakespeare's Hamlet debuted in New York.





# Furret Penthouses

## Furret Penthouses

Located within the building's iconic turrets, our two signature duplex penthouses boast private entrances, rooftop terraces and views of Lower Manhattan.

### CAPACITY

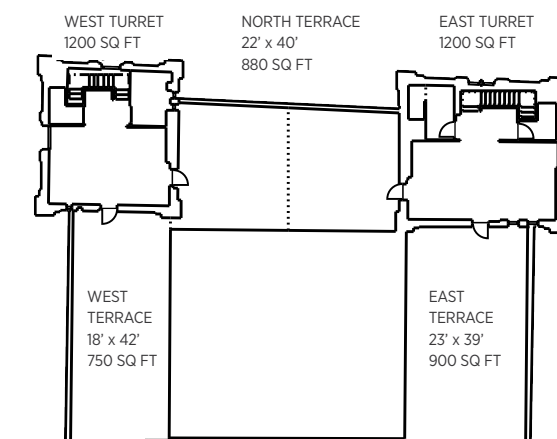
- ⊗ SEATED: 60 PER TERRACE
- ⊗ RECEPTION: 200 (ENTIRE ROOFTOP)

### DIMENSIONS

- ⊗ INTERIORS: 1200 square feet
- ⊗ EAST TERRACE: 900 square feet (23'x39')
- ⊗ NORTH TERRACE: 880 square feet (22'x40')
- ⊗ WEST TERRACE: 750 square feet (18'x42')

### FEATURES

- ⊗ 40 Foot Tall Vaulted Ceiling
- ⊗ Curated Artwork
- ⊗ Wireless/High-Speed Internet
- ⊗ Outdoor Terraces
- ⊗ Unique City View







# Beekman Weddings

## Weddings

The romance of Old New York is alive and well at The Beekman, which offers a blend of classic glamour and contemporary charm that makes it an incomparable venue for the ultimate Manhattan wedding.

### DETAILS

- ⊗ Menus created by acclaimed chef and restaurateur Tom Colicchio
- ⊗ Ideal for a wedding ceremony and reception for up to 90 guests
- ⊗ Unique spaces suitable for engagement parties, showers, rehearsal dinners and brunches
- ⊗ Packages include votive candles, printed menu cards, tables, chairs, china, glassware, flatware and linens
- ⊗ Special group rates available for wedding blocks





Exclusive Catering by Tom Colicchio's

## TEMPLE COURT



[beekmansales@thompsonhotels.com](mailto:beekmansales@thompsonhotels.com)

THE BEEKMAN

123 Nassau Street, New York, NY 10038

212- 233-2300 | [www.thebeekman.com](http://www.thebeekman.com)